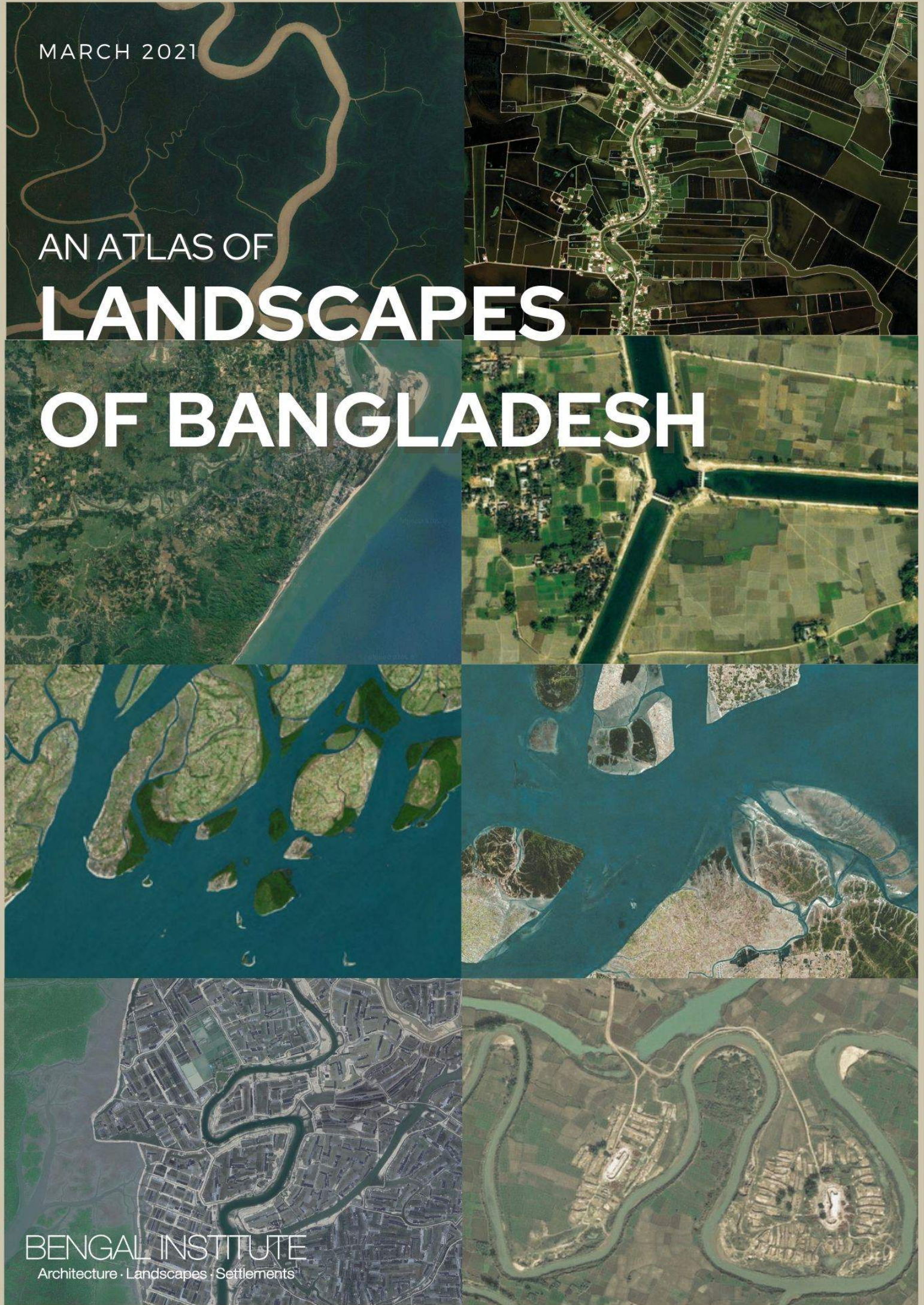


MARCH 2021

AN ATLAS OF

LANDSCAPES

OF BANGLADESH



BENGAL INSTITUTE
Architecture · Landscapes · Settlements

Bay^{1A}

This is a broad inlet of the sea where land curves inwards. There are several ways bays can form. They can form through plate tectonics which is the drifting and rifting of continents. Bays also form when an ocean



Hanauma Bay, Honolulu, USA

overflows a coastline or through constant erosion of the coastline into the ocean. Most of the water available at bays are brackish (mixture of fresh and saline) water. Because most bays are found at major port cities they tend to be calmer and more protected from tsunamis and storms than seas or oceans (National Geographic).

Refer to pg 7 for example in Bangladesh

The global distribution of important bays.



Coastal and marine landforms in Bangladesh



Legend

- Bangladesh International Boundary
- - - Bangladesh Maritime Boundary
- Rivers and Waterbody

Significant c&m features inside Bangladesh (Feature Name)

- ▲ Bay
- ★ Beach
- ✕ Continental Shelf
- ⚡ Continental Slope
- ★ Coral
- ⊗ Estuary
- ⊙ Island
- Sand Dune
- ⊕ Spit
- ⊕ Submarine Canyon
- Submarine Fan
- ⊙ Submarine Ridge

15-Bay of Bengal Submarine Fan(1Ja)

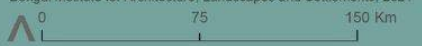
Bangladesh 200km

India 200 km

Dumuria Line

Indonesia 200 km

Projected Coordinate System: BTM
 Projection: Transverse_Mercator
 Copyright: Geography Research Unit (GRU)
 Bengal Institute for Architecture, Landscapes and Settlements, 2021





Madhupur and Bhawal Forest/Obaidul Fattah Tanvir



Sirajganj/Md Giashuddin Miah



Chattogram hill tracts/Unknown



Sundarban/iStock



Sylhet Tracts/Md. Mozharul Islam



Chakaria/Obaidul Tanvir



Ratargul Swamp Forest/Mehedi Murshed



Bhola Coastal Afforestation/UNDP



**a. Bijoypur,
Sunamganj,
Bangladesh**

**b. Dhobaura,
Mymensingh,
Bangladesh**



Chhora^{3Bb}

Chhora mainly refers to small, hilly rivers. These rivers originate from springs or waterfalls of the hilly regions. They get volume during the rainy season and often



Budbudi Chhora, Bangladesh

dry up during winter. These streams contribute water to large rivers. *Chhoras* are significant for ecology and centre for tourist attraction too. In the context of Bangladesh, it is situated in **Kulumchhora**(3Bba) village of Gowainhat upazila of Sylhet. Water of this *chora* comes from Kulumchhora waterfall of Bangladesh-India border. This is a major tourist attraction of Sylhet district. The other example, **Budbudi Chhora**(3Bbb) is situated at Patiya of Chattagram district. Gas field located under the *chora* cause bubble to form in stream water-from what it got the name. Though not very popular yet, it is becoming a tourist site gradually (Samakal, 2016).

The global distribution of important *chhoras*.



9



Chalonda Gorge/Unknown

13



Sangu Valley/Unknown



Ulka Gorge/bdnews.com

14



Himchari/Mostafizur

11



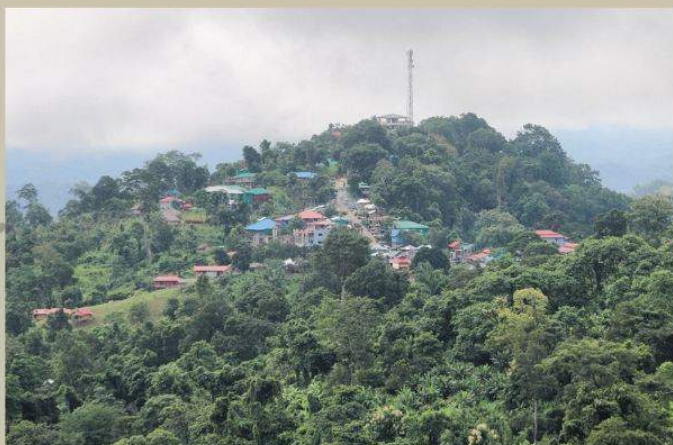
Chattogram Hills/Unknown

15



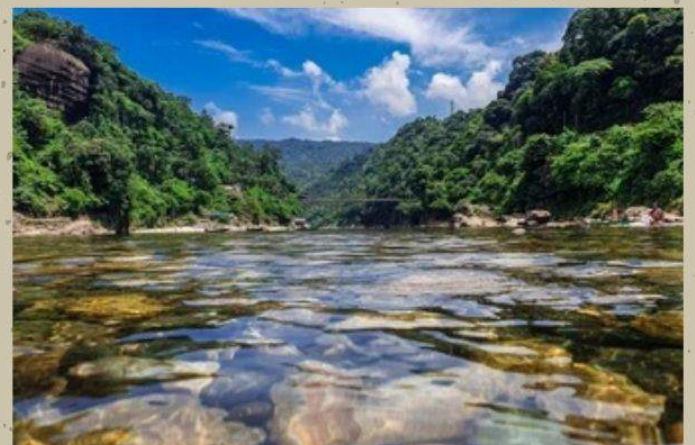
Suptadhara/Lonely Traveller

12



Sazek Valley/Unknown

16



Jaflong/Travelmate



**a. Khulna,
Bagherhat and
Satkhira,
Bangladesh**

Due to salinity intrusion, salt farming has become a popular means of livelihood generation and thus, salt pans have turned to be a major

landscape feature of Southern Bangladesh.

**b. Kutubdia
Islands,
Chittagong,
Bangladesh**

The Kutubdia Islands over the years have reduced salt productions. This is because of water overflows, tidal inundation and unusual rainfall in the region.





**a. Sreemongol,
Moulvibazar, Bazaar,
Bangladesh**



**b. Panchagarh,
Bangladesh**

4Ba. Bandarban, Bangladesh

The aerial image on the right shows Jhum Land in Bandarban, Bangladesh. The bare patches show which areas have been cultivated and how the farmers are progressing.



During heavy rain fall, chances of landslides in the region increases and costs peoples homes and lives (Banglapedia, 2014).



a. Joydia Baor, Jheinaidah and Baluhar Baor, Jessore, Bangladesh

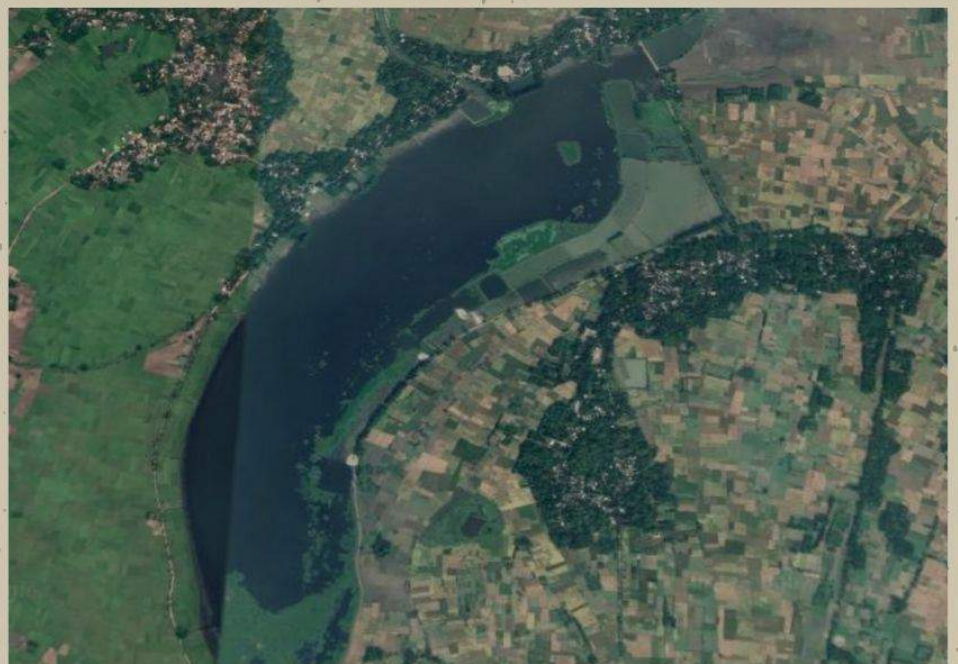
The aerial image shows the Joydia Baor (6Aa) on the left and the Baluhar Baor (6Ab) on the right. Joydia Baor is famous for cultivation of

various species of fishes. Scenic beauty of this baor has developed tourism here (Bangladesh National Portal, 2019).

b. Bukbhara Baor, Jessore, Bangladesh

The aerial image below shows the Bukbhara Baor. This specific baor holds varieties of fish species (BdFish, 2014). Bukbhara Baor occupying an area of 142.5 hectare is breeding ground of nearly 38 fish species. Apart from fishing, boating, outing etc. recreational activities have grown centring the haor (Alam, 2003). The ecosystem of Baluhar Baor also supports a luxuriant growth of aquatic macrophytes, which generates primary production and provides

breeding ground for fishes and shelter for migratory birds (Islam et. al. 2008). 3 species of Amphibians, 13 species of Reptilians, 52 species of Birds and 16 species of Mammalian fauna are found from Baluhar Baor and its adjacent area (Islam, 2003).





a.Ramsagar, Dinajpur, Bangladesh

The aerial image on the left shows the Ramsagar Lake in Dinajpur, Bangladesh. Its size is 31.53 ha. Heritage and natural beauty attracts visitors here. This lake was

excavated by Late Ramnath as the area was drought and famine stricken and a lot of lives were lost due to lack of water and food (Independent, 2018).

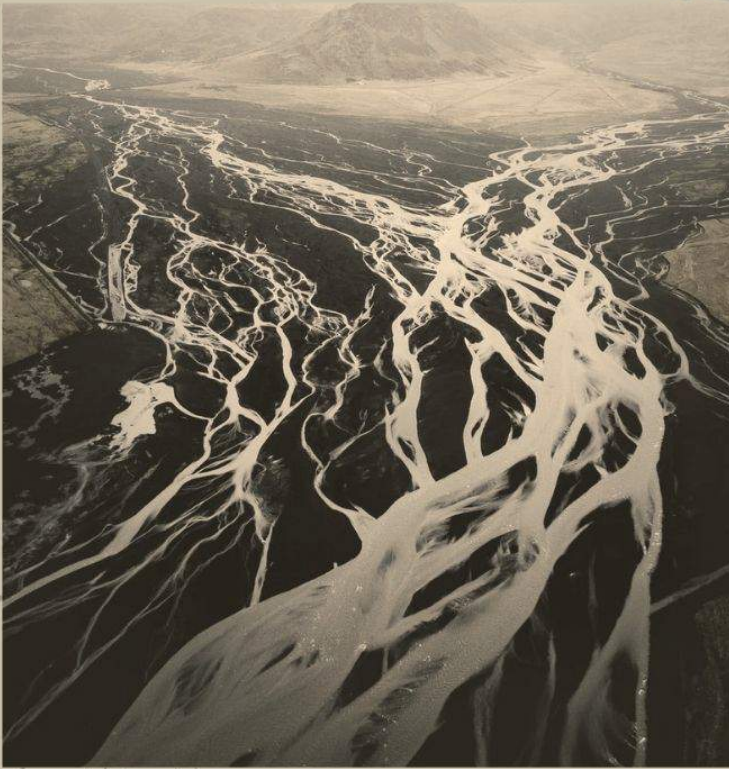
b.Kaptai Lake, Rangamati, Bangladesh

Kaptai Lake the largest man-made freshwater body in Bangladesh. Though created as a result of for hydroelectric power generation, it contributes to produce significant quantity of freshwater fish, navigation, flood control and agriculture, etc.

(Mahmood and Haider, 2014). The Karnafuli River water created this lake for the construction of dam over it.



Braided Rivers ^{61a}



Rakajia River, New Zealand

This is known as a river consisting of complex networks of small channels carrying heavy amounts of sediments that split and join to give a braided appearance. These channels are separated by temporary islands (Patowary, 2016). It is typically formed when bars, locally known as chars, start to emerge in channels due to reduced river flow or an increase in sediments causing river flow to go in two or more separate ways on either side of the chars (World Landforms,

2015). During low flow periods, as gravel is dropped the river 'braids' into small channels and temporary islands. However, after storms and during monsoon season when rivers rise, some or all the braids combine into a single wide channel that may wash the islands (Braid, 2021).

The global distribution of important braided rivers.



Wetland features in Bangladesh



- Legend:**
- Bangladesh International Boundary
 - - - Bangladesh Maritime Boundary
 - Rivers and Waterbody
 - Significant wetland features inside Bangladesh (Feature Name)**
 - ◆ Beel
 - ✱ Braided River
 - Canal: Irrigation
 - ⊕ Chute
 - ◇ Creek
 - ⊕ Haor
 - Hilly Lake
 - ✕ Incipient Oxbow Lake
 - Jheel
 - Limestone Lake
 - ⚡ Meandering River
 - Pond
 - Salt/Tidal Marsh

Projected Coordinate System: BTM
 Projection: Transverse_Mercator
 Copyright: Geography Research Unit (GRU)
 Bengal Institute for Architecture, Landscapes and Settlements, 2021



Joydia Baor/Lonely Traveller



Chalan Beel/Bangladesh National Portal



Baluhar Baor/Tipu Sultan



Rampura Khal/Mapio



Bukbharā Baor/Amal



Jaldhaka/VYMaps



Arial Beel/Unknown



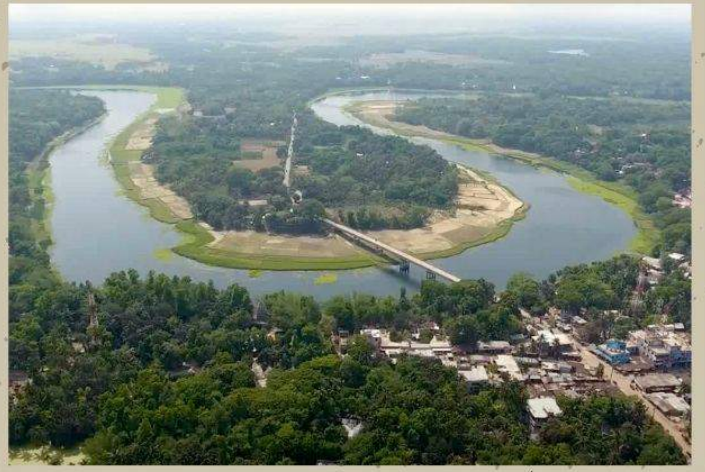
Kumar River/Lonely Traveller

9



Ichamati River/Ichamati Walk

13



Nabaganga River/Armaan

10



Tanguar haor/Unknown

14



Hatirjheel/Anisur Rahman

11



Hakaluki Haor/Unknown

15



Beri Jheel/Hossain Ahmed

12



Gorai River/STAR

16



Ramsagar/Lonely Traveller

17



Kaptai Lake/Masumul Islam

21



Tajhat Pond/Tanvir Ibna Shafi

18



Boga Lake/Unknown

22



Aat Pukur/Unknown

19



Pukupara Lake/Hasan Al Mahmud

23



Jamuna River/Unknown

20

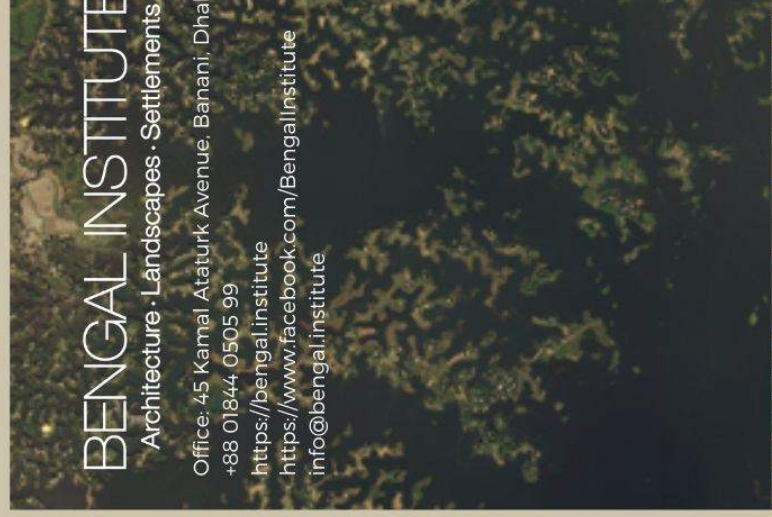
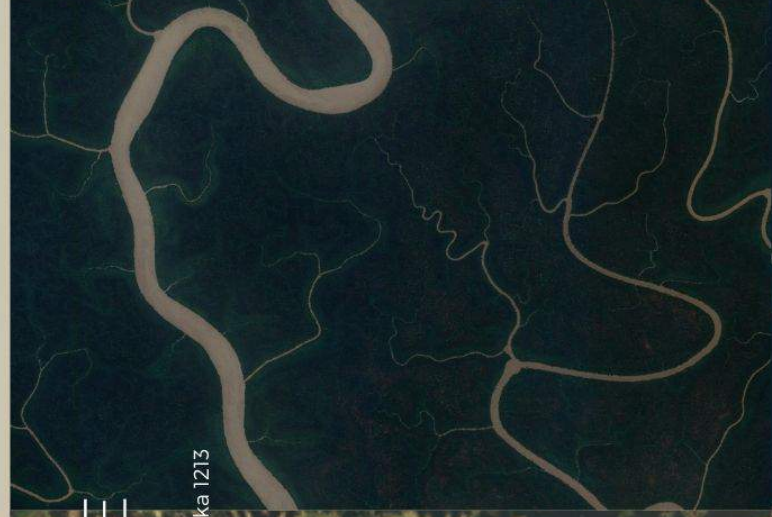
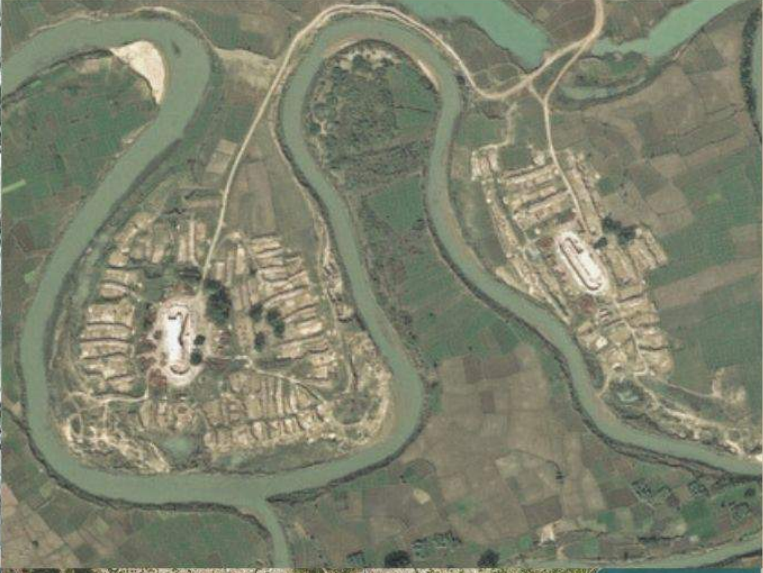


Niladri Lake/Masum

24



Teesta River/Frank Cornfield



BENGAL INSTITUTE

Architecture · Landscapes · Settlements

Office: 45 Kamal Ataturk Avenue, Banani, Dhaka 1213

+88 01844 0505 99

<https://bengal.institute>

<https://www.facebook.com/BengalInstitute>

info@bengal.institute